



CIVIL UNDERGROUND

Statement of Qualifications



CONTENTS

VEC Business Profile	03	Additional Add-On Services	08
Our Team	04	Civil Underground Project Flow	09
Testimonials and Certifications	05	Project Experience	10
Core Civil Features	06	Contacts and Location	17

VEC BUSINESS PROFILE

VEC is a **BIM and VDC construction technology consultancy** specializing in the integration of Building Information Modeling (BIM), Virtual Design and Construction (VDC), and digital workflows to enhance project efficiency, collaboration, and execution. We partner with self-performing trade contractors, general contractors, designers, and owners to streamline project delivery through **advanced modeling, prefabrication strategies, and data-driven decision-making.**

250+ Employees

500+ Projects

Nationwide territories

6 offices worldwide

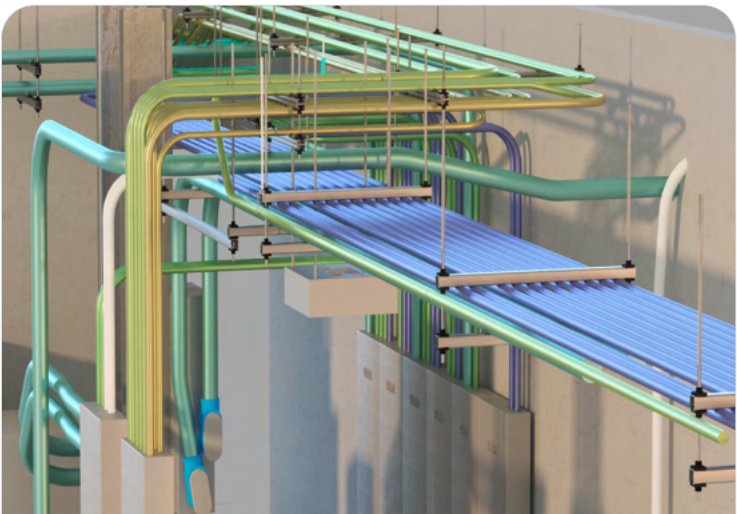
HQ in San Francisco

15+ Years of Experience

SERVICES



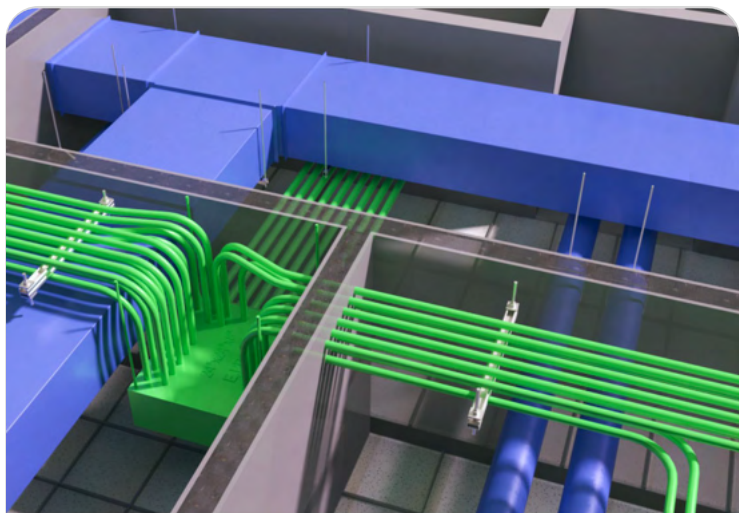
Civil Underground
BIM & VDC



Electrical BIM &
VDC



Mechanical and
Plumbing



VDC Coordination
Management



Onsite Quality
Control



Enhanced Design



CORE MARKET SECTORS



Mission Critical



Healthcare &
Life Science



Public Works



Commercial




Aviation

OUR TEAM



Jesus Chavez
Senior Project Manager

 jesus@vec-us.com

 Jesus Chavez

With over seven years of experience in the construction industry, Jesus Chavez has contributed to a wide range of projects, including data centers, medical facilities, schools, and commercial developments. Driven by a strong passion for civil engineering and construction, Jesus has built a track record of success in project management and BIM coordination. He is known for his ability to solve complex design challenges, streamline workflows, and enhance collaboration across multidisciplinary teams. Committed to delivering high-quality results while maintaining VEC’s efficiency, Jesus effectively manages multiple projects through strong communication, organizational skills, and the support of his team.



Joe Sabbagh
Project Manager

 joe.sabbagh@vec-us.com

 Joe Sabbagh

Joe Sabbagh brings over five years of experience in the design, coordination, permitting, and construction of Mission Critical Facilities, including data centers and advanced manufacturing sites. With a background in civil engineering and construction, Joe excels at leveraging technology-driven workflows to enhance multidisciplinary coordination and collaboration. His expertise lies in integrating data-informed solutions to streamline project delivery, improve collaboration, and address complex design challenges in high-performance infrastructure environments.



Erick Nascimento
Production Manager

 nascimento@vec-br.com

 Erick Nascimento

Erick Nascimento is a Civil Engineer with two MBAs - one in Onsite Technology and Project Management, and another in Project and Process Management. With over 9 years of experience in the construction industry, he has contributed to a wide range of projects, including hospitals, schools, and data centers. Erick has held key roles in project coordination and management across multiple disciplines, including plumbing, mechanical, and electrical; however, his passion lies with Civil Underground. He takes pride in consistently delivering high-quality, optimized VDC models that streamline operations and enhance productivity for end users.

TESTIMONIALS AND CERTIFICATIONS

CERTIFICATIONS



Minority Business
Enterprise



SF Local Business
Enterprise



Disadvantaged Business
Enterprise



Small Business
Enterprise

WHO WE WORK WITH

CLAYCO

HITT

CLARK
CONSTRUCTION

Tutor Perini



Brent Scarbrough
& COMPANY
SINCE 1985
100% EMPLOYEE OWNED

WILLIAM A.
HAZEL
INCORPORATED

Valverde
Construction, Inc.

FLINT

JMB
CONSTRUCTION, INC.



Sr. Project Manager,
Sanco Pipelines, Inc.

“**VEC** has been an invaluable partner using both their past experience and innovative new technologies to help our projects become more efficient and more profitable. Sanco Pipelines, Inc. has been able to eliminate future utility conflicts as well as refine our material procurement by being able to visually “see” the installation on the screen before the work takes place in the field. I would highly recommend Jesus Chaves and their team at **VEC** for any future project.”

CONFIDENTIAL

Project Operations,
Confidential
Engineering Firm

“...Right off the bat, I knew **VEC** was going to make sure it was a successful coordination effort. They ran some of the most effective and efficient meetings I’ve ever been a part of...The team was so impressive, that we hired **VEC** to perform modeling and coordination efforts for Civil Utilities on a neighboring project... They were extremely easy to work with, responsive, and delivered on every promise. It has been a great pleasure working with the **VEC** team, and I’m hoping to work with them in the future!”

HITT

Project Manager,
HITT Contracting, Inc.

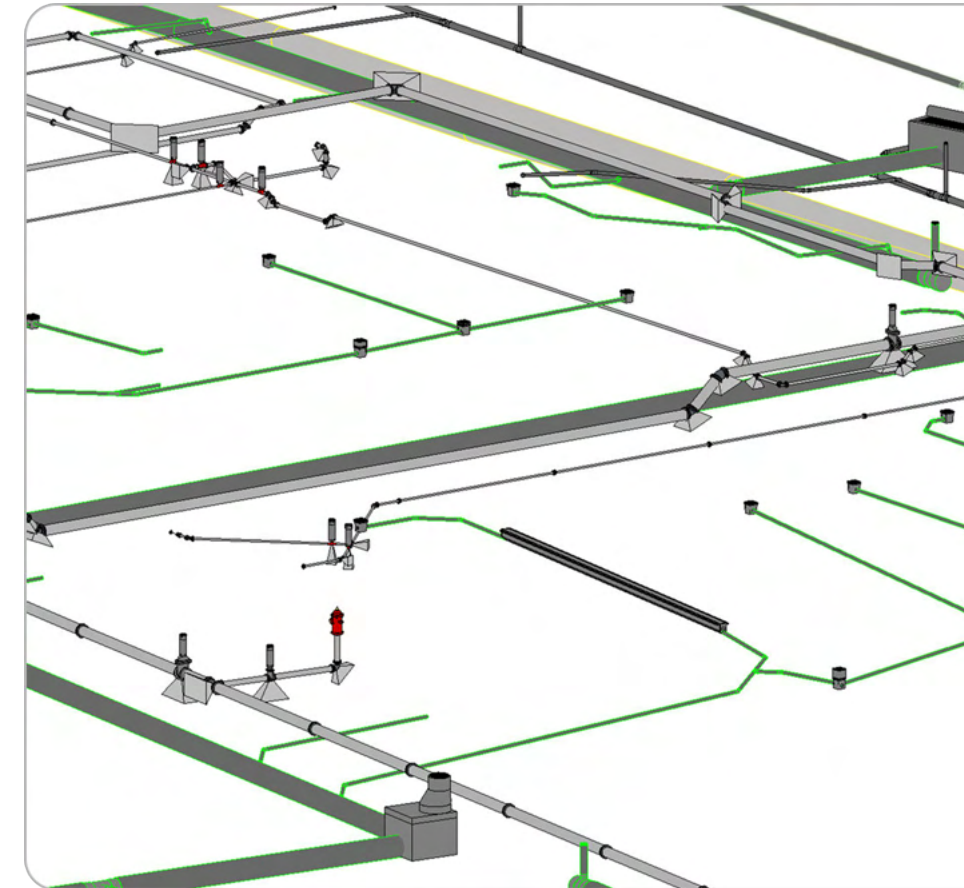
“Throughout my time at HITT, I have worked with several different companies that provide BIM Management & Coordination. From day 1 **VEC** proved to be the most prepared and organized of all those companies... After this project, I moved **VEC** to the top of my list for outside BIM Management & Coordination.”

CORE CIVIL FEATURES



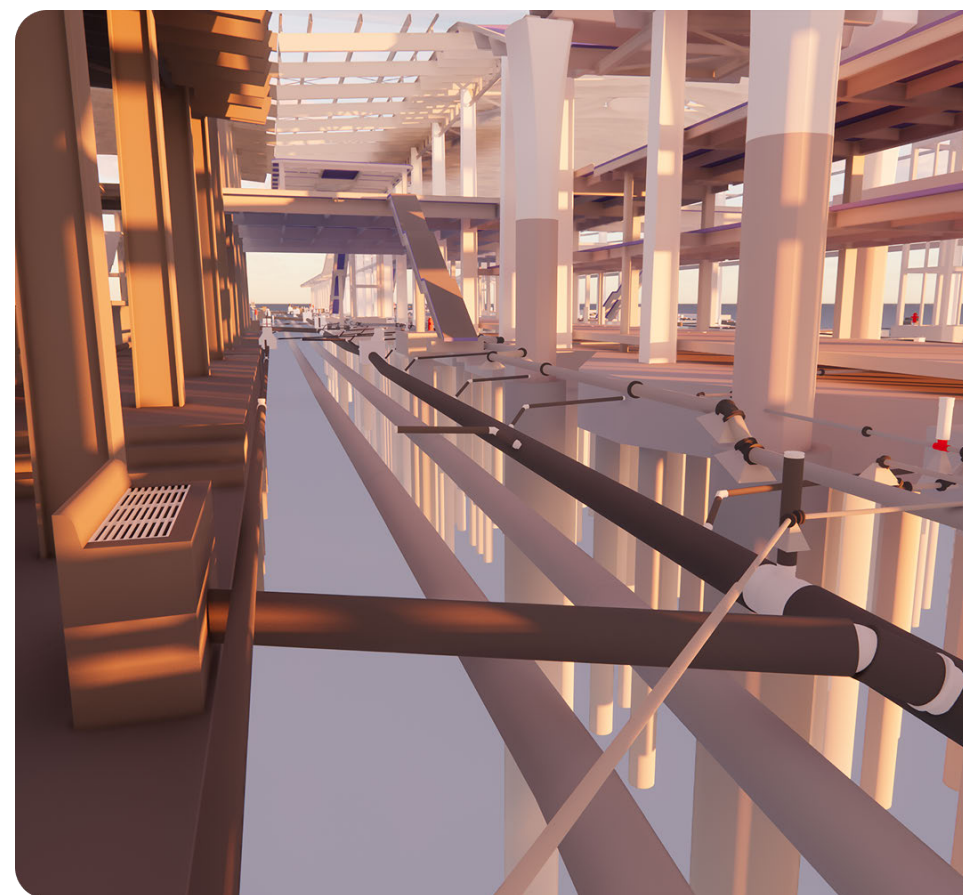
Project Management

- ✓ Our Construction Project Management ensures that your project is completed on time, on budget, and to your exact specifications.
- ✓ We work closely with you to understand your needs and goals. We keep you informed at every stage of the project to ensure that you are satisfied with the progress and outcome.
- ✓ We use the latest technology and tools to streamline the project management process, including project scheduling, cost tracking, and document management.



Modeling & Detailing

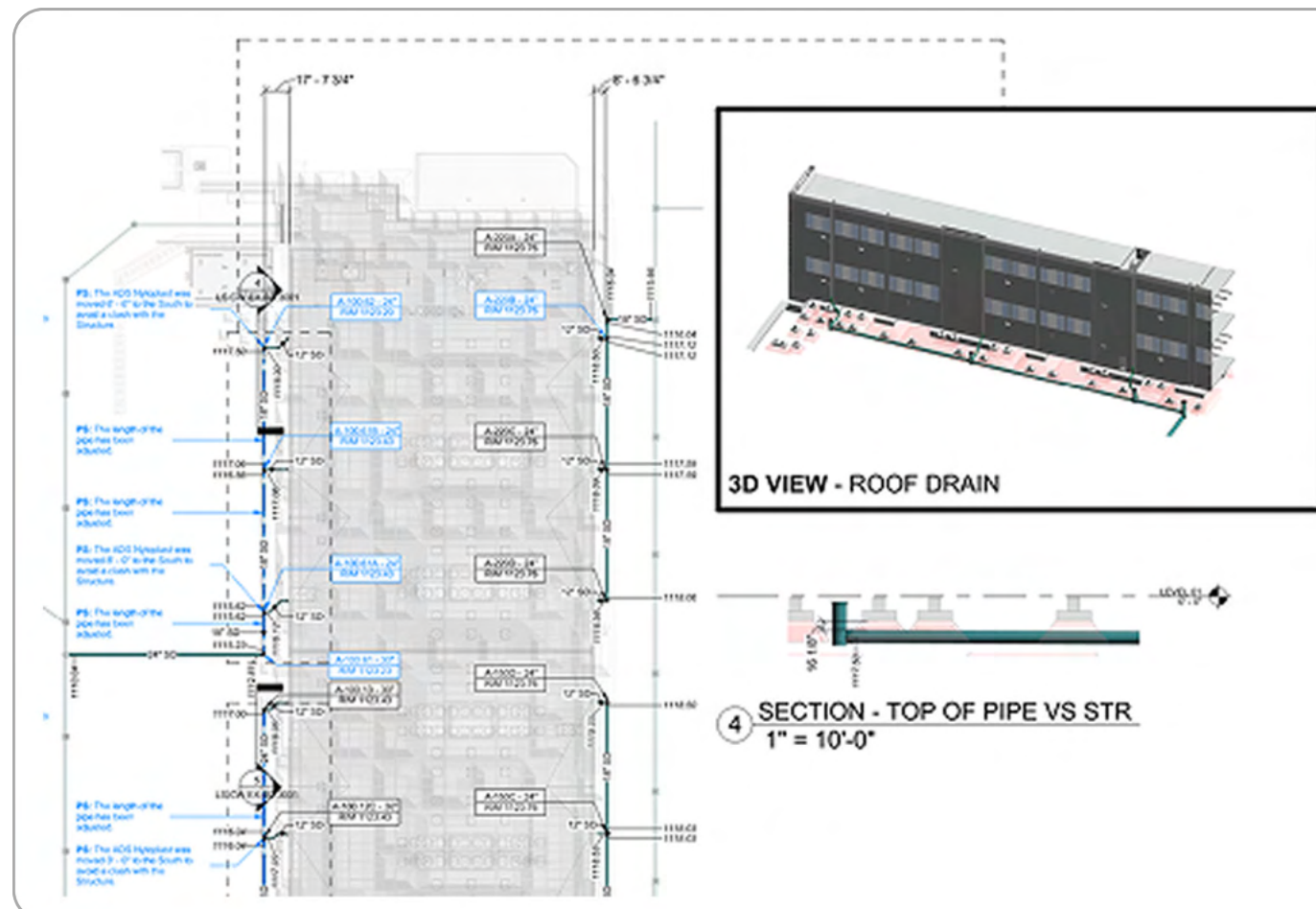
- ✓ Our BIM team uses the latest 3D modeling technology to create accurate and detailed models of your project, from concept to construction.
- ✓ Our experienced modelers and detailers work closely with you to understand your needs and goals, and to ensure that the models and details are accurate, complete, and feasible.
- ✓ By choosing our Civil Underground BIM service you will save time, reduce costs, and minimize risk while ensuring that your project is completed to the highest standards.



BIM Coordination

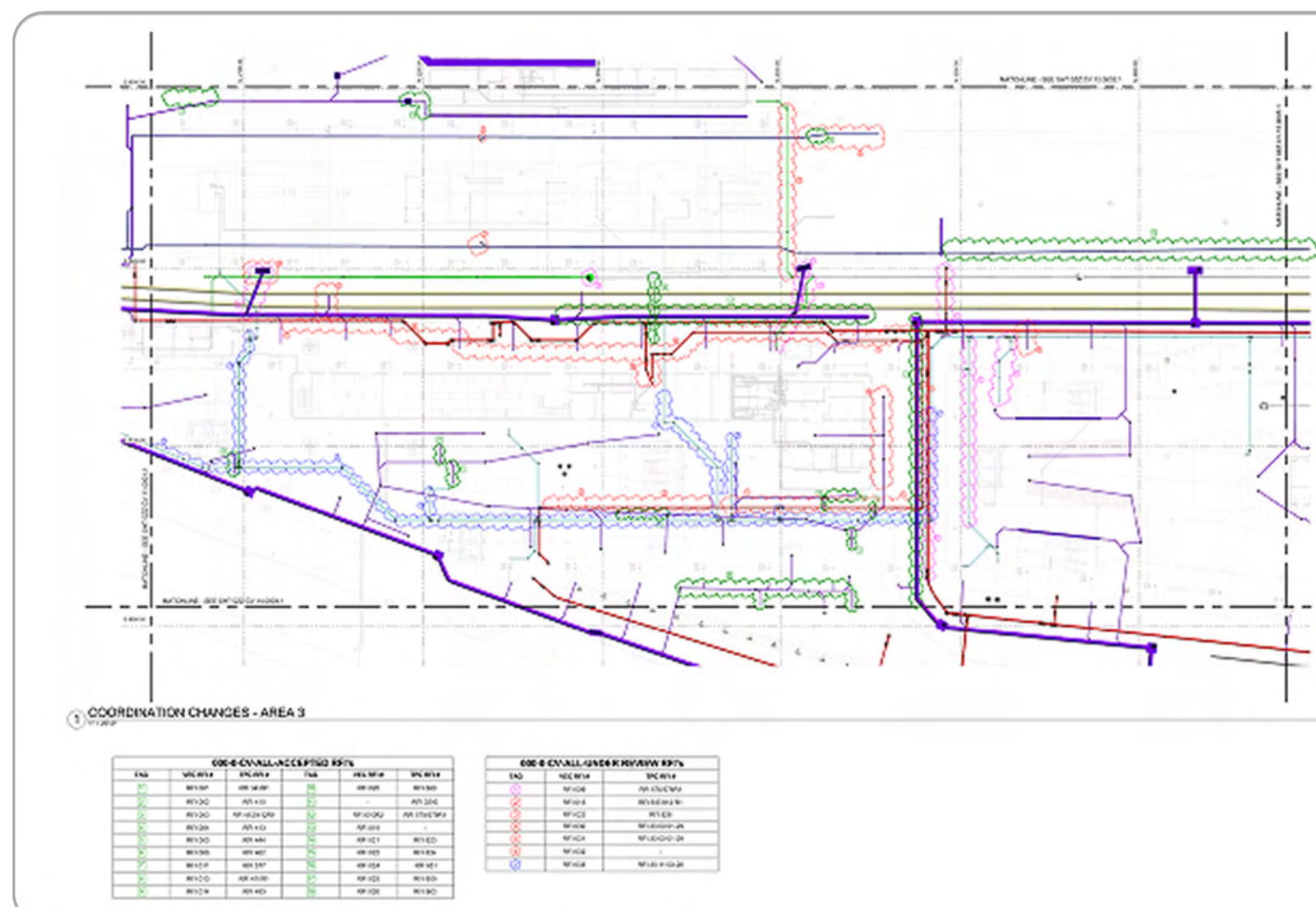
- ✓ Using software like Navisworks and Revit, BIM coordination can help to reduce construction costs by identifying potential clashes and conflicts early on in the design phase, avoiding costly changes during construction.
- ✓ We will collaborate on your behalf with architects, engineers, and contractors, improving communication and reducing misunderstandings.
- ✓ BIM coordination streamlines the design and construction process, reducing the number of errors and changes, which saves time and money.

CORE CIVIL FEATURES



Design Review

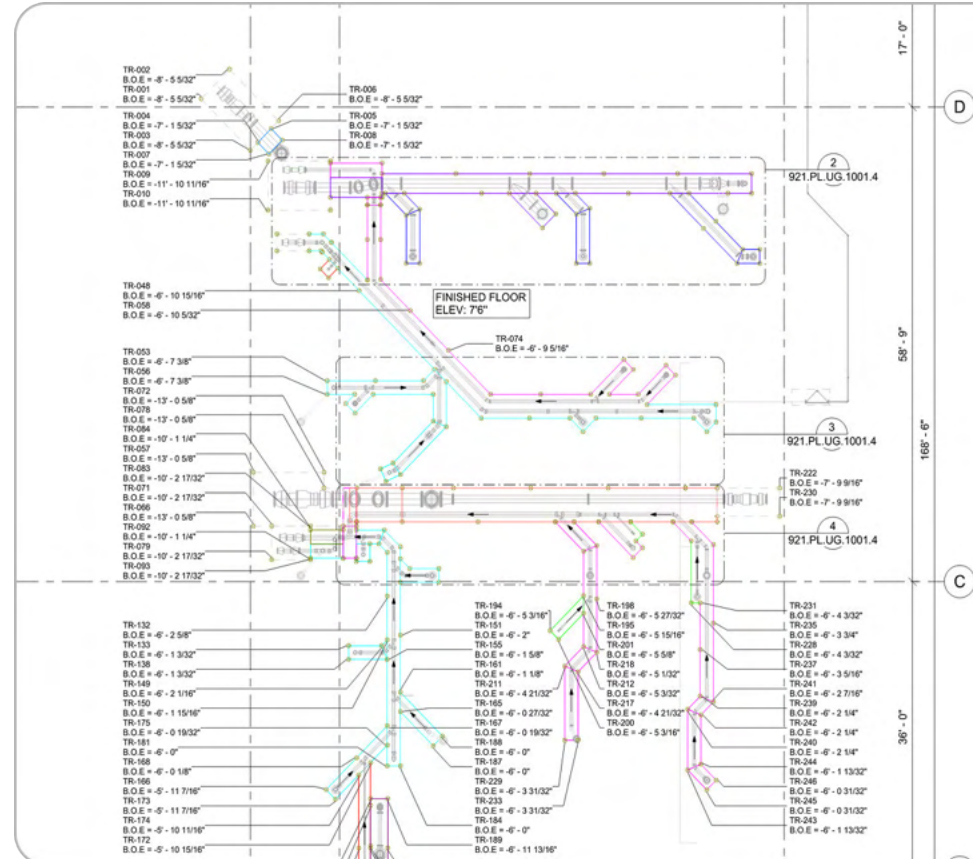
- ✓ We actively collaborate with the design team to align the design model with our client's means and methods, proactively resolving coordination clashes before they become issues.
- ✓ Unlike others who wait for direction, we take initiative by proposing real solutions during coordination - working directly with the design team to move the project forward.
- ✓ Our process helps uncover COR opportunities early as the design is never perfect, with many of our solutions ultimately accepted into the official design, ensuring the client's construction approach remains the top priority.



RFI Management

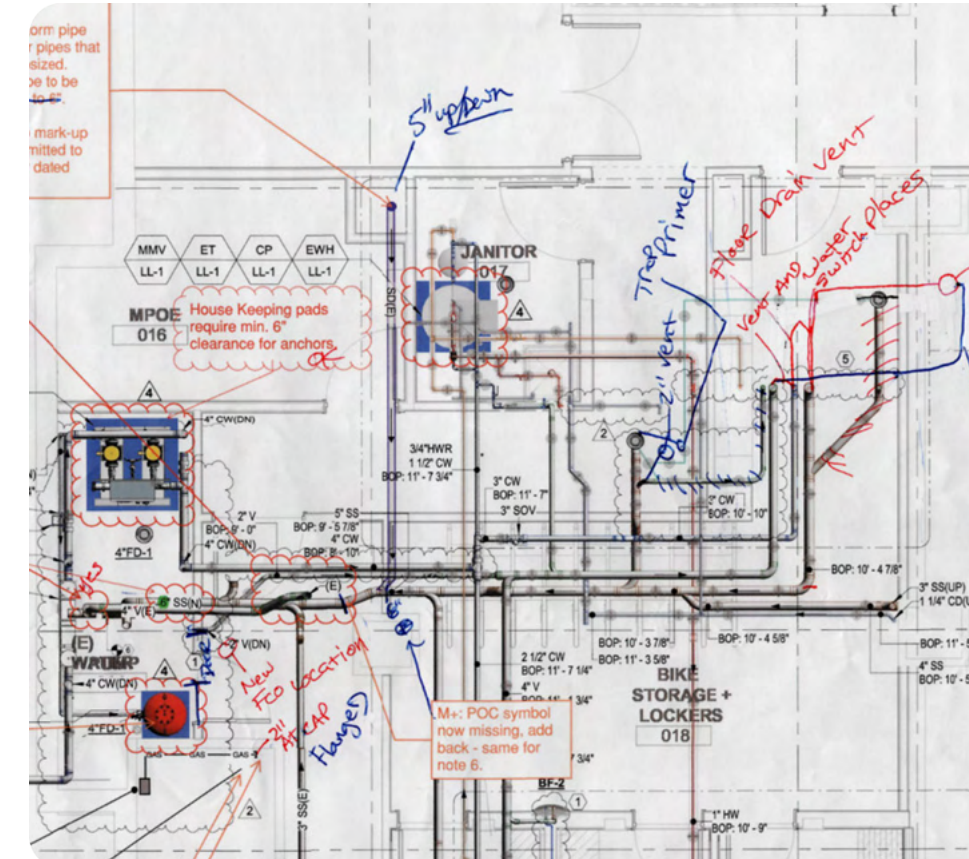
- ✓ We take full ownership of the RFI process crafting clear, impact-driven questions backed by coordination data to protect our client from delays and added scope.
- ✓ Every RFI we submit includes visual exhibits that communicate the issue, ensuring the design team understands the concern and our client's position.
- ✓ We actively track RFI responses and follow up to keep things moving, while documenting impacts to support CORs, schedule extensions, or other protective actions for our client.

ADDITIONAL ADD-ON SERVICES



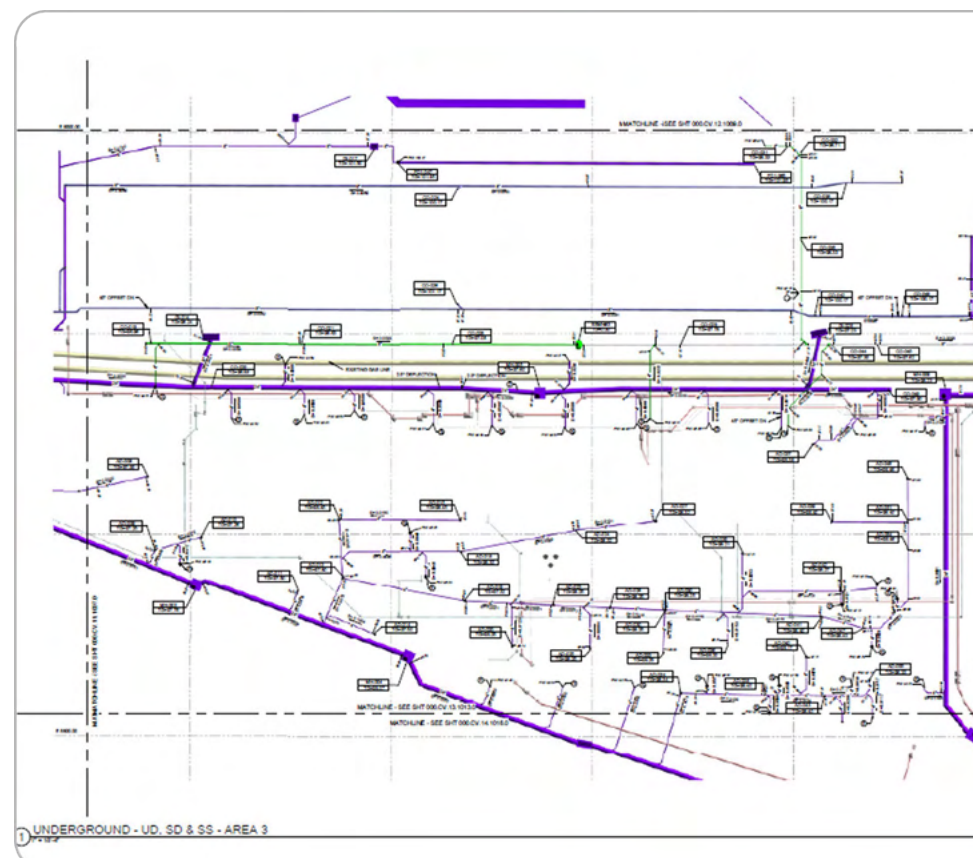
Layout Points

- ✓ Layout points generated from coordinated modeling.
- ✓ Critical for concrete/underground – Gets it right before you pour or backfill.
- ✓ Faster layout – Speeds up installation with total station or robotic layout tools.
- ✓ Minimizes rework – Reduces costly errors and relocations in the field.



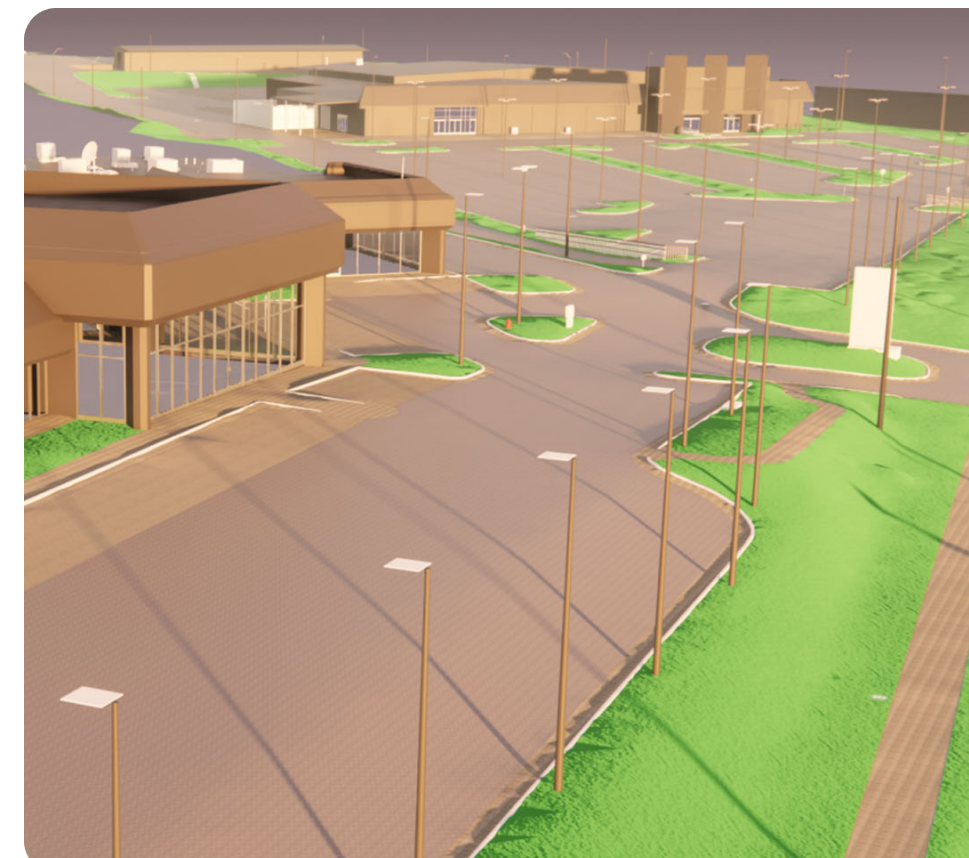
As-Built Modeling

- ✓ Accurate record – Captures exact utility locations for future reference. A requirement asked by project owners.
- ✓ Supports maintenance – Makes repairs and upgrades faster and safer.
- ✓ Reduces risk – Avoids costly hits during future excavations or installs.
- ✓ Improves closeout – Delivers clear, client-ready documentation.
- ✓ Validates installation – Confirms everything was built per plan or identifies deviations.



Coordinated Installation Drawings

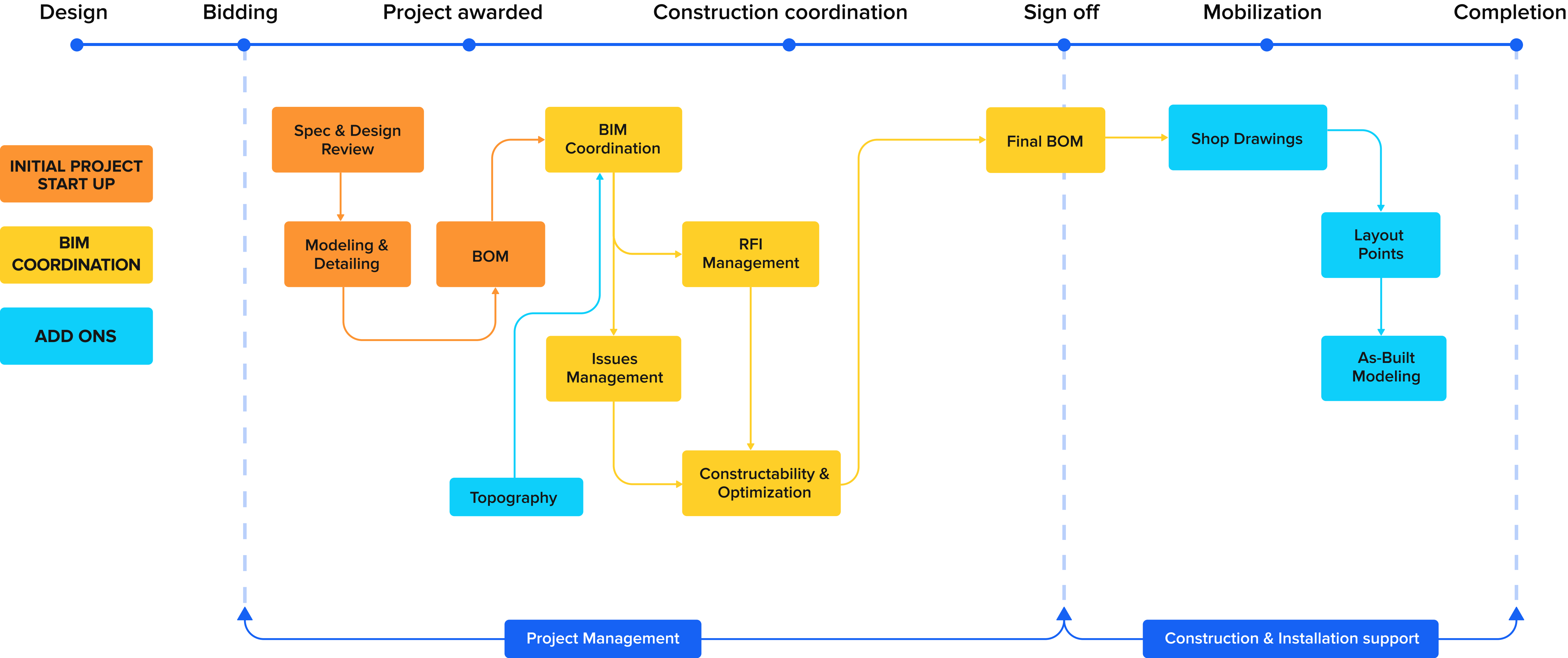
- ✓ Coordinated drawings resolve clashes between trades (e.g., electrical, plumbing, mechanical) before installation, reducing rework and costly delays.
- ✓ Prevents field changes and RFI delays. Fewer errors = less overtime, less material waste, and more predictable schedules.
- ✓ Installers follow a clear, conflict-free plan. No guesswork, faster installation, and higher-quality work.



Topography

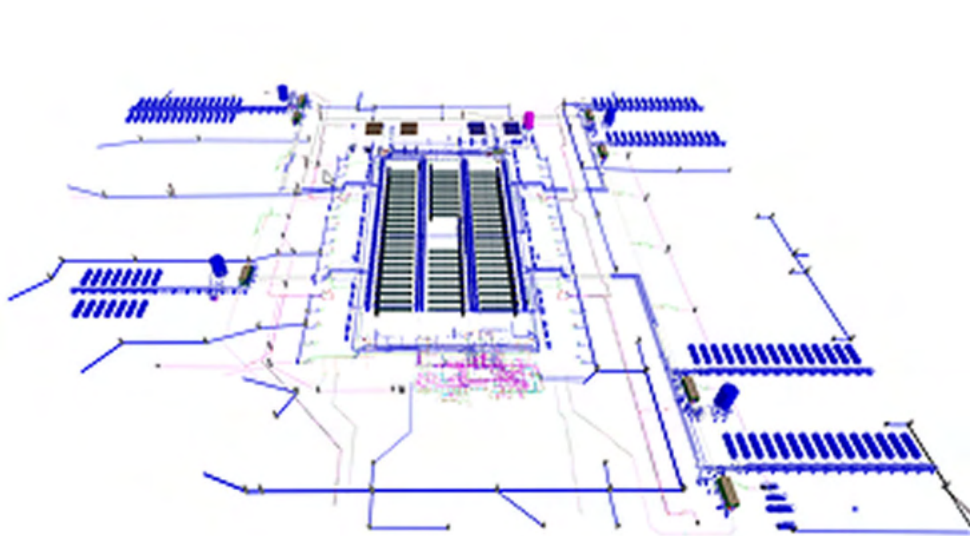
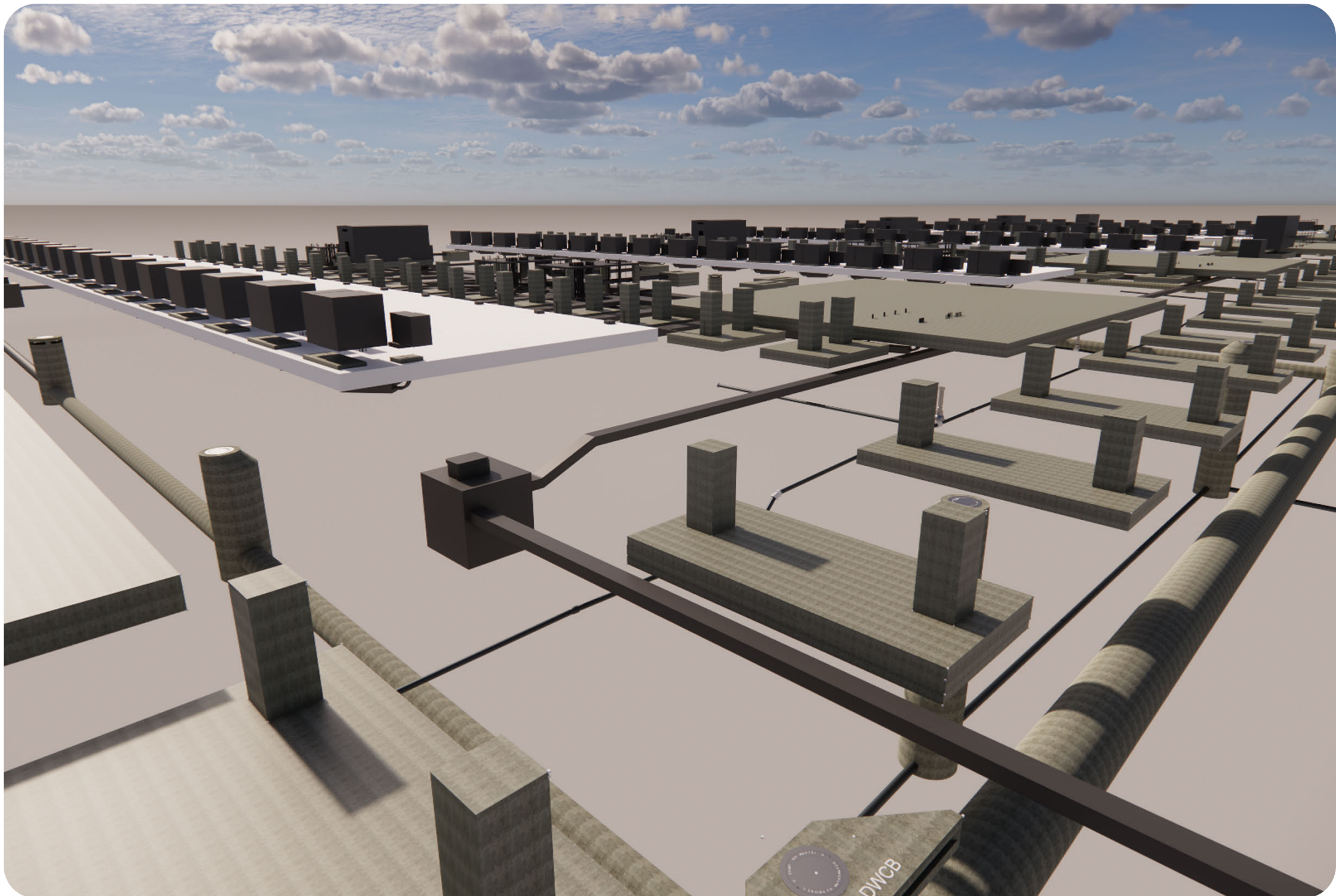
- ✓ Improved visualization and analysis of topographic data, facilitating better understanding and interpretation of the terrain.
- ✓ Accurate and detailed representation of the terrain, enabling precise engineering and design decisions.
- ✓ Advanced analysis capabilities, such as slope analysis, cut and fill calculations, and drainage simulations, enable optimized design solutions and efficient construction planning.

CIVIL UNDERGROUND PROJECT FLOW





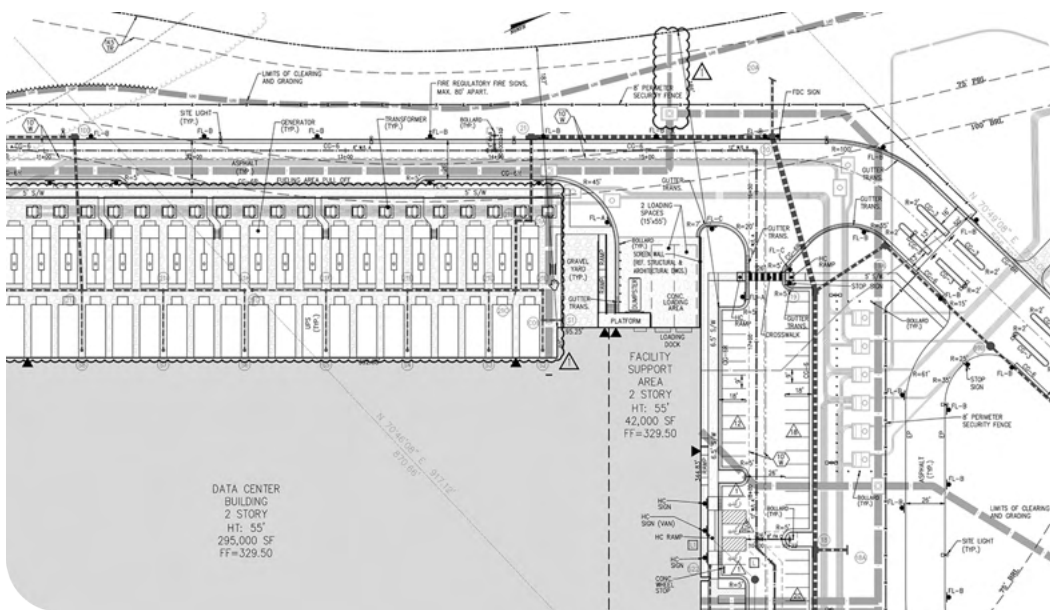
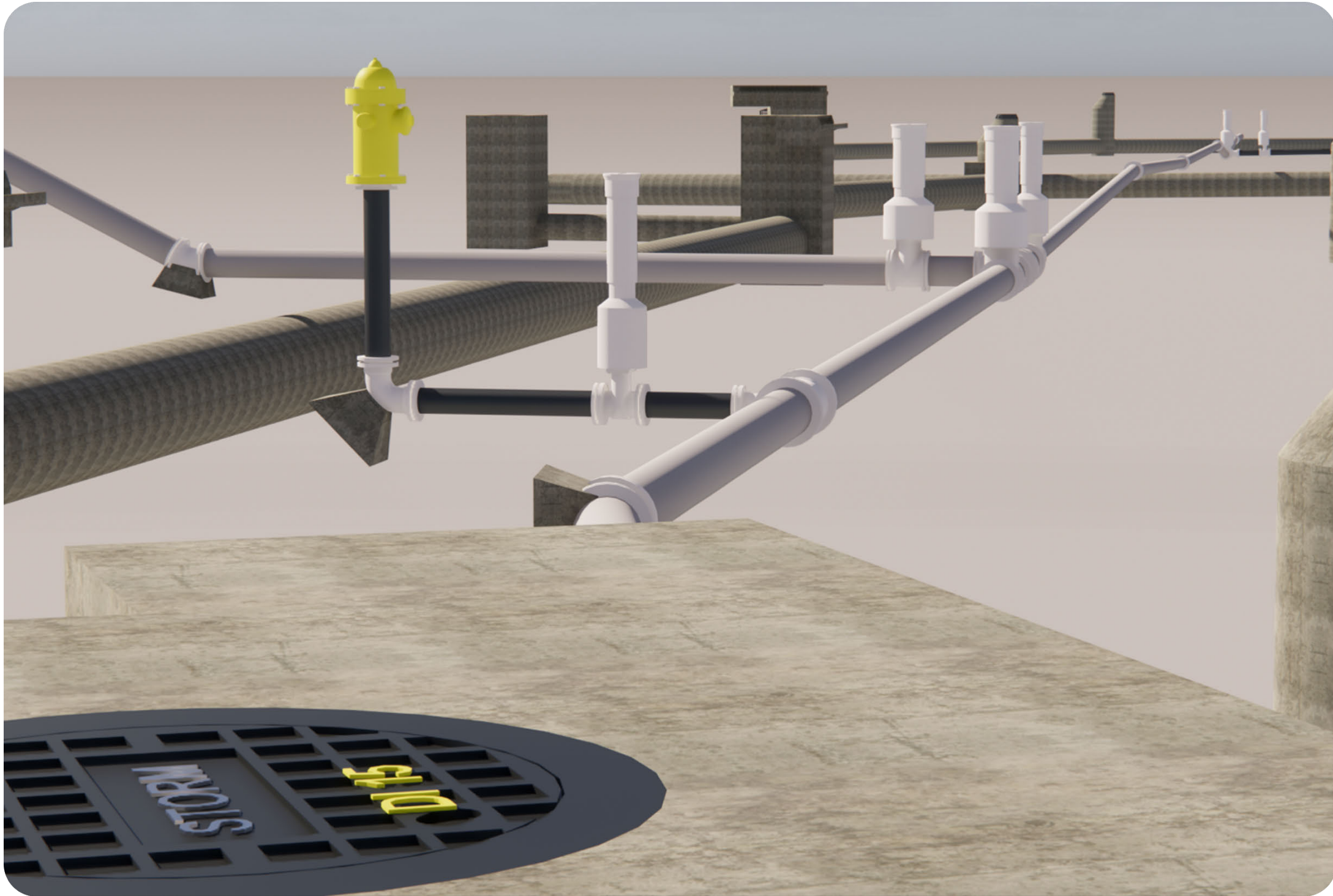
PROJECT EXPERIENCE



Confidential Data Center #7

Market Sector: Mission Critical	Size: 900,000 sq. ft.	Year: 2023 — Ongoing
Location: Atlanta, GA	Services Provided: BIM Coordination Support Civil Underground Wet Utilities Modeling	

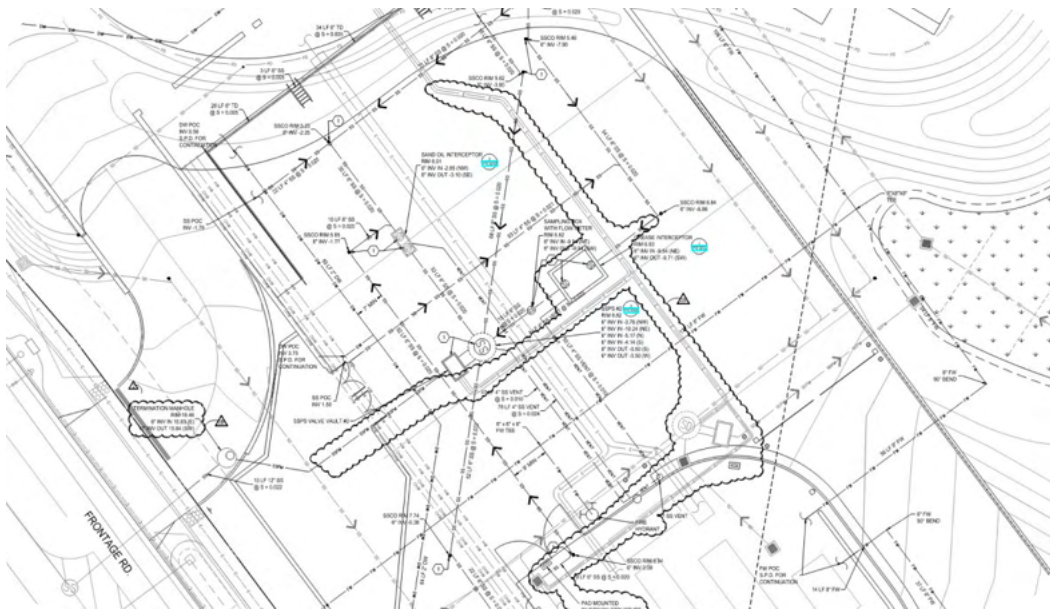
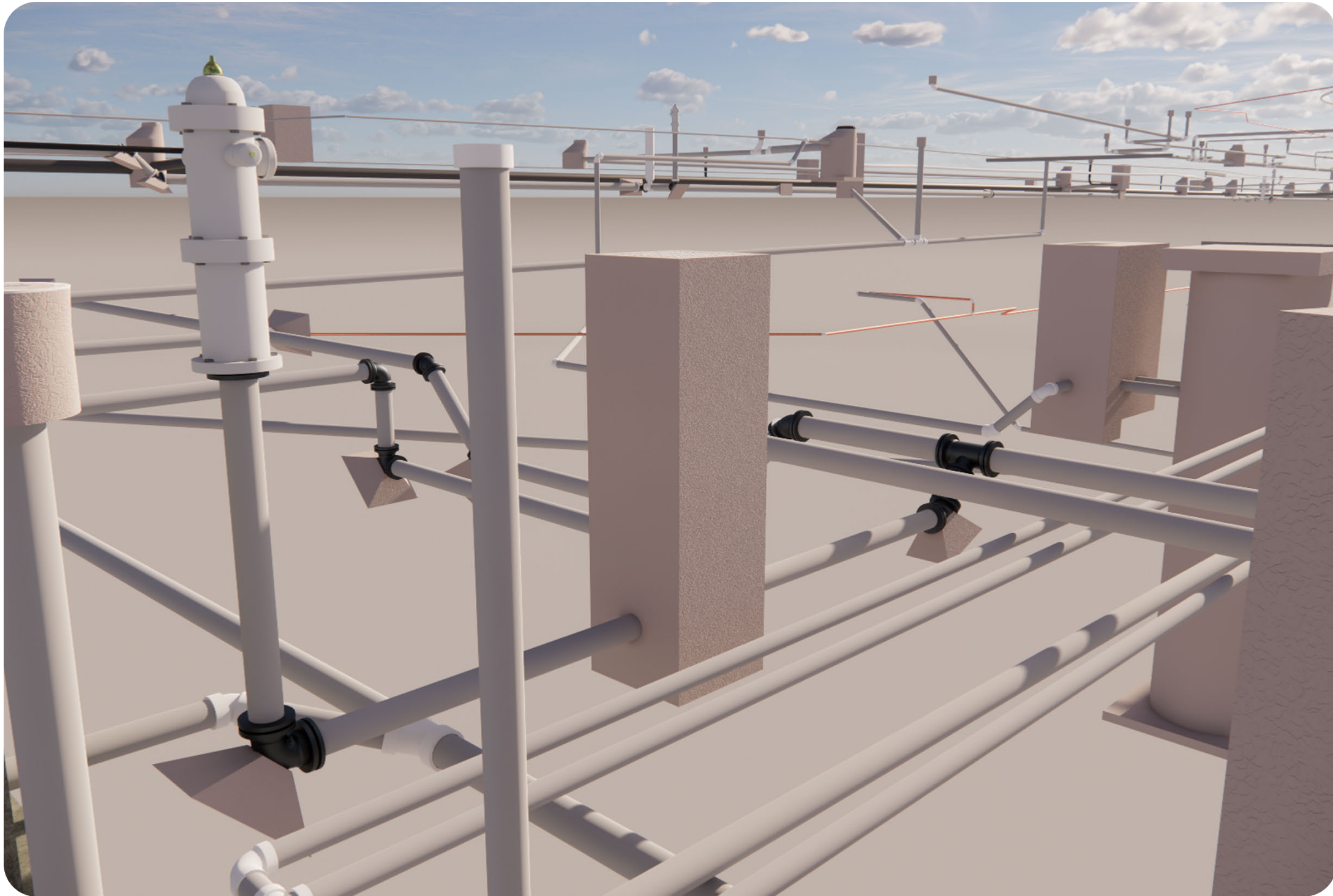
This confidential data center project began with a 300 MW Data Center building, but through the VEC Civil team’s commitment, constructability-focused approach, and sense of ownership, the scope quickly expanded to include the entire site. Our experienced team secured the 900,000 sq. ft. field work with accurate, refined, and neat installation drawings that rendered the construction process streamlined and well-organized. The project now encompasses five data centers across a site of land around 6.6 million sq. ft., with additional phases planned. The expected end date for the mega campus is 2032. The VEC Civil team has collaborated with multiple general contractors and subcontractors to coordinate all underground wet utilities on this highly complex and fast-paced project.



Confidential Data Center

Market Sector: Data Center	Size: 1,300,000 sq. ft.	Year: 2022 — 2023
Location: Northern Virginia	Services Provided: BIM Coordination Support Civil Underground Wet Utilities Modeling	

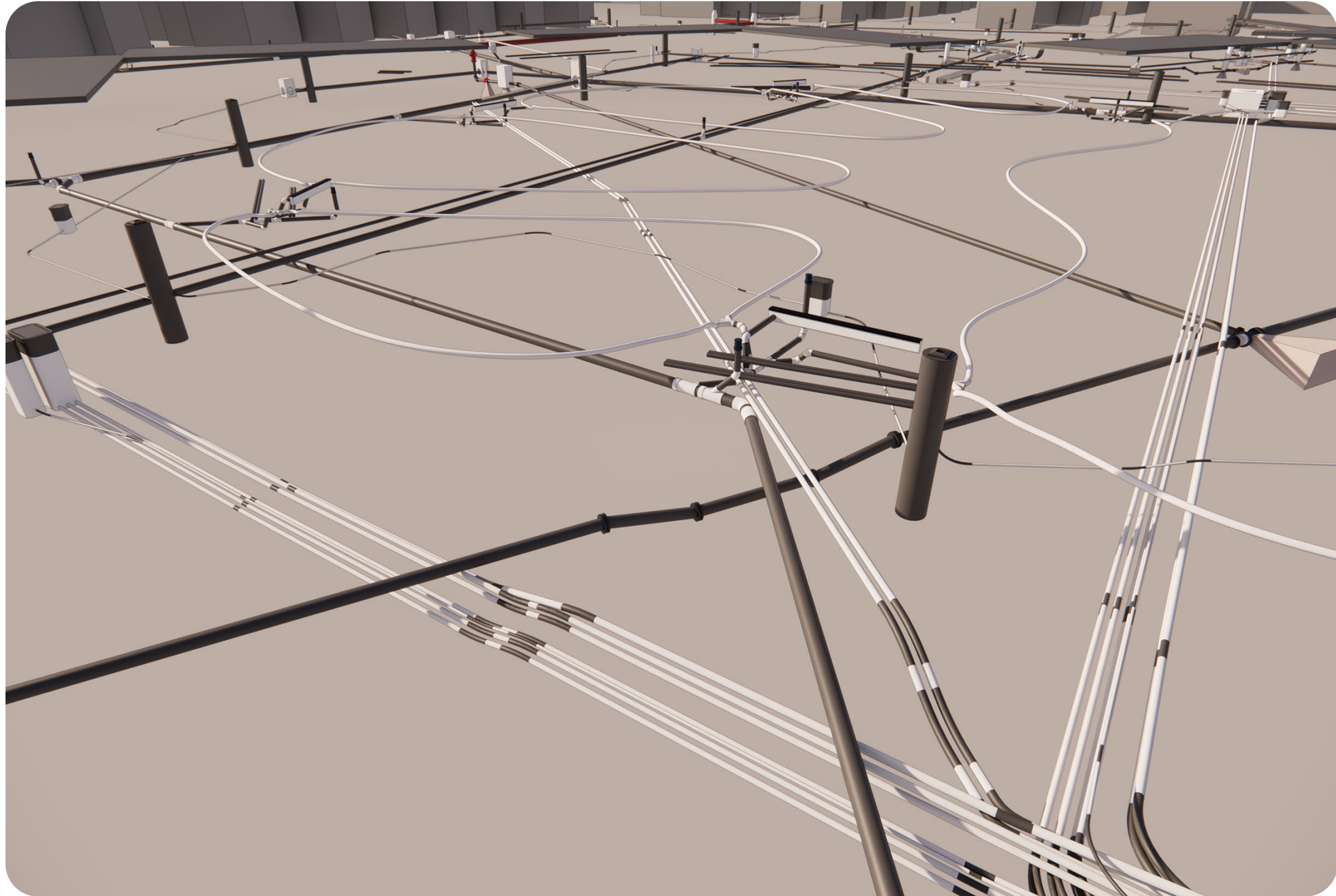
Upon completion, the Confidential Data Center, located in Northern Virginia, will be part of the global data center infrastructure developed by the development group. Northern Virginia has been expanding rapidly to develop data center campuses to meet demand.



Google Landings

Market Sector: Commercial Office	Size: 1,089,435 sq. ft.	Year: 2022
Location: Mountain View, CA	Services Provided: BIM Coordination Support Civil Underground Wet Utilities Modeling	

Dubbed the Google Landings project, Google has built out a large part of its tech campus in a series of cascading office buildings linked together with a sawtooth roof between Rengstorff Avenue and Permanente Creek. Google would also provide publicly accessible open spaces, trails, and paths for walking and biking on the site, as well as a pedestrian and bike bridge across Permanente Creek.



K-12 Education

Market Sector:

Education

Size:

70,000 sq. ft.

Year:

2021

Location:

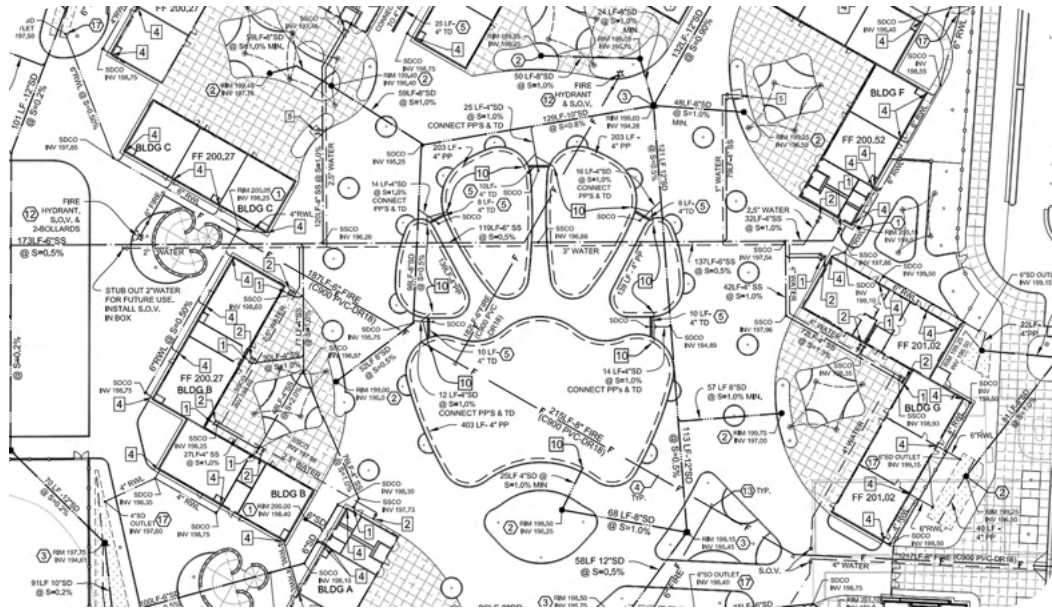
Gilroy, CA

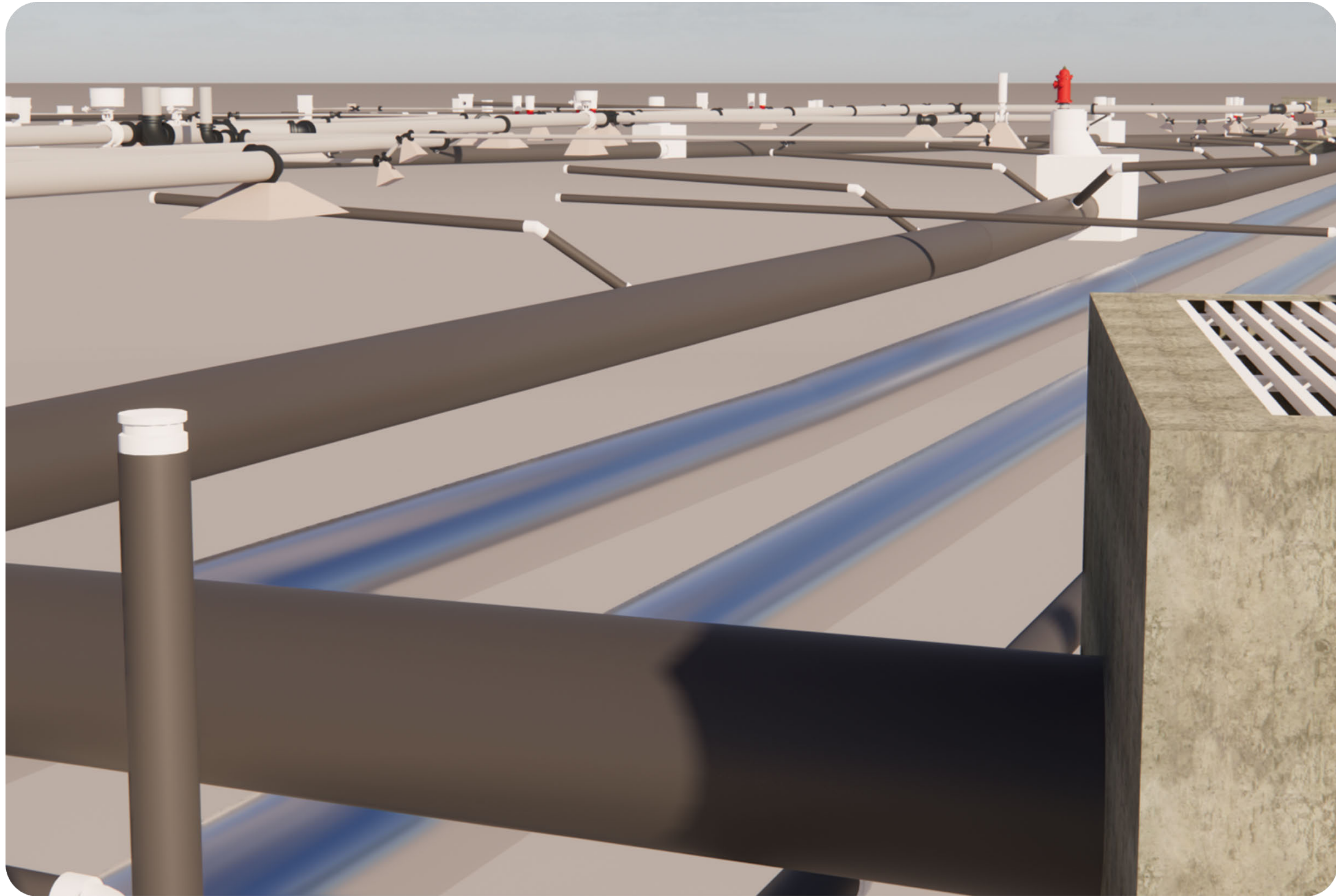
Services Provided:

Onsite Scanning Verification

Civil Underground Wet & Dry Utilities Modeling

South Valley Middle School campus is approximately 22 acres and consists of 19 buildings that will be reconfigured into a new modernized campus for the existing middle school. Replacement buildings include all new construction for new learning communities, administration, gymnasium, multi-use, food service, library/media center, and other academic programs. New construction will consist of approximately 70,000 square feet.

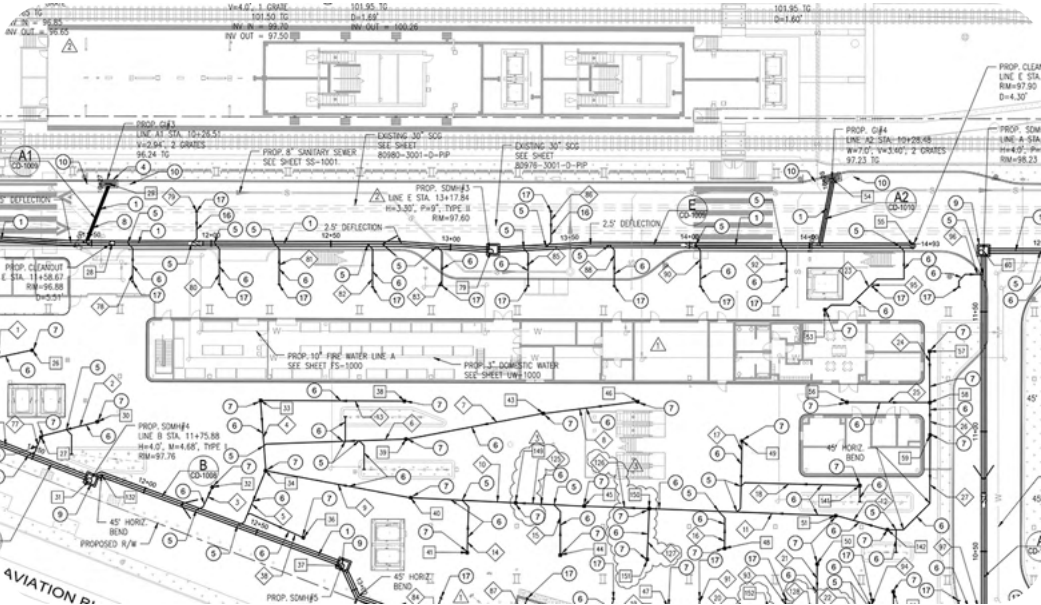


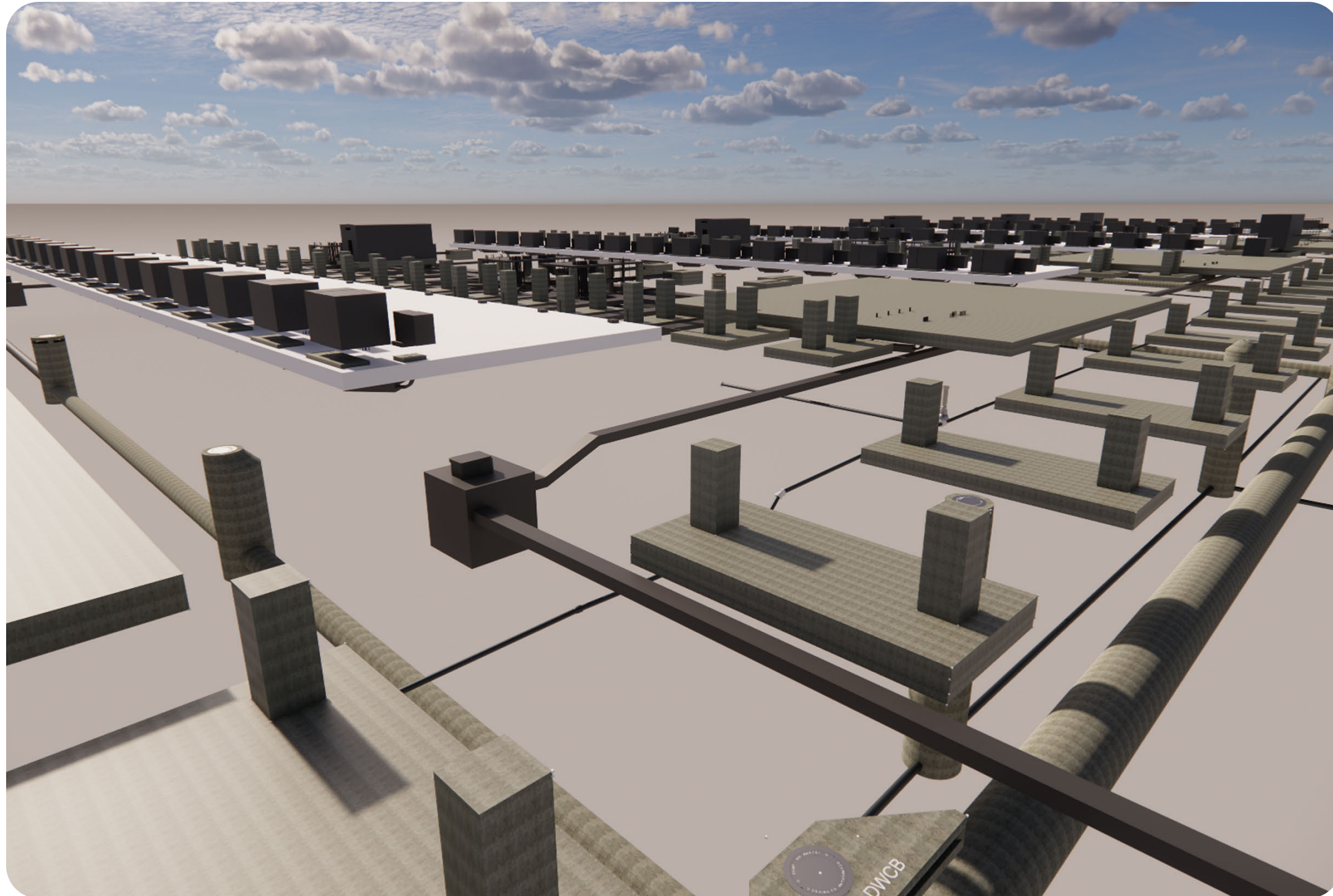


LAX Metro Connector

Market Sector:	Size:	Year:
Transportation	460,000 sq. ft.	2022
Location:	Services Provided:	
Los Angeles, CA	BIM Coordination Support	
	Civil Underground Wet Utilities Modeling	

Los Angeles Metro’s plan for better transit includes a connection to Los Angeles International Airport (LAX) with the Airport Metro Connector Transit Station (AMC) at Aviation Boulevard/96th Street. Once in operation, this new station will let riders transfer quickly and easily between LAX and Los Angeles Metro’s network.





Confidential Client Data Center #11

Market Sector:
Mission Critical

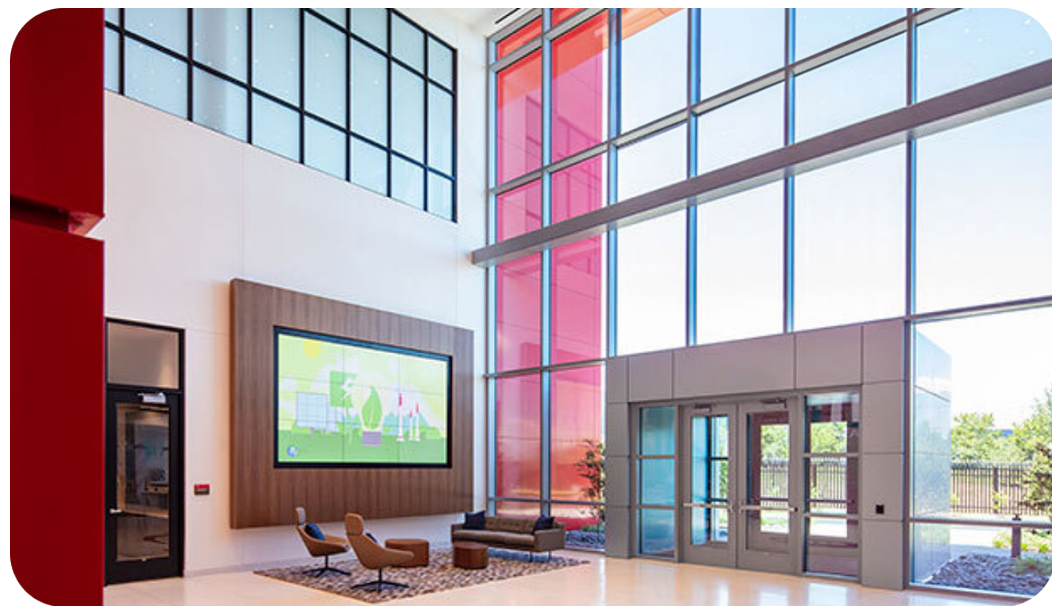
Size:
2,190,000 sq.ft.

Year:
2023—2025

Location:
Atlanta, GA

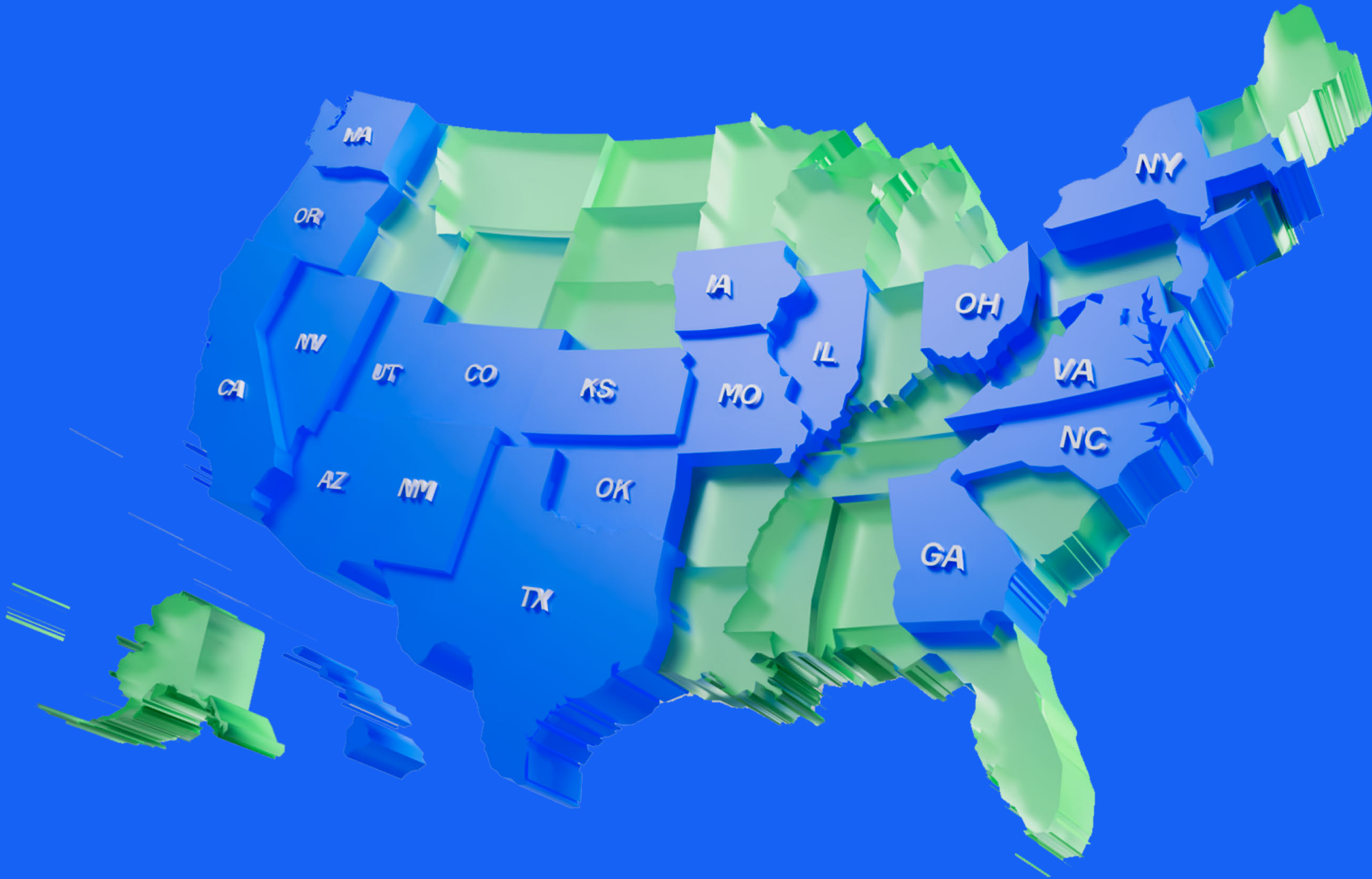
Services Provided:
Wet Civil Underground BIM/VDC

One of the tech industry titans is constructing a massive data center campus, whose site will span 615 acres and is projected to include up to 16 buildings with 6.6 million square feet of data center space and 400,000 square feet of office space. VEC’s confidential client brought us in as trusted partners, leveraging our **Civil Underground BIM/VDC expertise**. This hyper-scale data center project began with a single building, but through our team’s commitment, constructability-focused approach, and sense of ownership, the scope quickly expanded to include the entire site. VEC is proud to support a client whose ambitious vision is reshaping the digital infrastructure landscape at a global scale.



CONTACTS AND OFFICE LOCATIONS

NATIONWIDE TERRITORIES



CONTACT US

-  civil@vec-us.com
-  vec-us.com
-  [+1 \(415\) 888-1832](tel:+14158881832)

OFFICE LOCATIONS

San Francisco

201 Spear Street,
Suite 1750
San Francisco, CA 94105

Tracy

615 International Parkway
Suite 100
Tracy, CA 95376